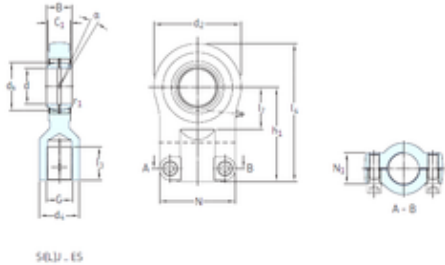




SKF SIJ30ES plain bearings



Bearing No. SIJ30ES

Bore Diameter	30 mm
d	30 mm
d2	80 mm
d4 max.	36 mm
dk	40,7 mm
h1	85 mm
l3 min.	29 mm
l4 max.	125 mm
l7 min.	35 mm
r1 min.	0,6 mm
B	22 mm
C1 max	19 mm
N max	80 mm
N1 max	19 mm
Thread (G)	M20x1,5 Tolerance 6H
Angle	3 °
Weight	1,35 Kg
Basic dynamic load rating (C)	62 kN

SIJ30ES Bearing 2D drawings and 3D CAD models