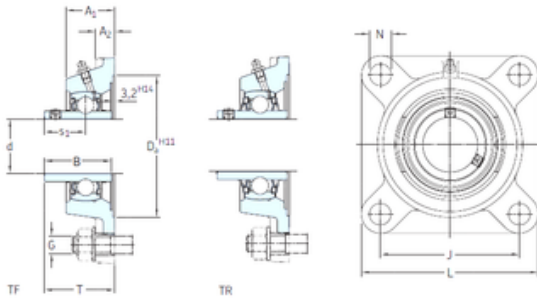




# Guangzhou Wangli Auto Parts Co., Ltd.

## SKF FY 1.3/8 TF bearing units

Bearing No. FY 1.3/8 TF



FY 1.3/8 TF Bearing 2D drawings and 3D CAD models

Bore Diameter	34,925 mm
Width	42,9 mm
d	34,925 mm
s1	25,4 mm
A1	34,5 mm
B	42,9 mm
G	12 mm
J	92 mm
L	118 mm
T	46,4 mm
A2	13 mm
Weight	1,4 Kg
Basic dynamic load rating (C)	25,5 kN
Basic static load rating (C0)	15,3 kN
Fatigue load limit (Pu)	0,655
Category	Flange Block Bearings
Inventory	0.0
Manufacturer Name	SKF
Minimum Buy Quantity	N/A
Weight / Kilogram	1.45
EAN	7316577754950
Product Group	M06110
Number of Mounting Holes	4
Mounting Method	Set Screw
Housing Style	4 Bolt Square Flange Block
Rolling Element	Ball Bearing



## Guangzhou Wangli Auto Parts Co., Ltd.

Housing Material	Cast Iron
Expansion / Non-expansion	Non-expansion
Mounting Bolts	1/2 Inch
Relubricatable	Yes
Insert Part Number	YAR 207-106-2F
Seals	M Seal
Housing Configuration	1 Piece Solid
Pilot Configuration	No Pilot
Inch - Metric	Inch
Long Description	4 Bolt Square Flange Block; 1-3/8" Bore; 5.1" Bolt Circle; 3-5/8" Bolt Spacing; 1 Piece Solid; Set Screw Mount; Cast Iron; Ball Bearing; 1-11/16" Length Thru Bore; Relubricatable;
Other Features	Single Row   Standard Duty   Wide Inner Race   Open End   Has Flinger   Y Bearing
Category	Flange Block
UNSPSC	31171501
Harmonized Tariff Code	8483.20.40.40
Noun	Bearing
Keyword String	Flanged
Manufacturer URL	<a href="http://www.skf.com">http://www.skf.com</a>
Manufacturer Item Number	FY 1.3/8 TF
Weight / LBS	3.2
Bore	1.375 Inch   34.925 Millimeter
Nominal Bolt Circle Diameter Round	5.1 Inch   130 Millimeter
Cartridge Pilot Diameter	0 Inch   0 Millimeter
Bolt Spacing	3.625 Inch   92.08 Millimeter
Cartridge Pilot Depth	0 Inch   0 Millimeter



## Guangzhou Wangli Auto Parts Co., Ltd.

Length Thru Bore	1.688 Inch   42.87 Millimeter
Housing material	Cast iron
$D_a$	106.4 mm
$D_{b1}$	87 mm
$D_{b2}$	95 mm
A	34.5 mm
$A_1$	13 mm
$A_3$	3.2 mm
$A_5$	24.5 mm
N	14 mm
$s_1$	25.4 mm
$R_G$	1/4-28 UNF
$R_1$	22.5 mm
$D_N$	6.5 mm
$SW_N$	7 mm
$G_N$	1/4-28 SAE-LT
$J_6$	106 mm
$J_7$	29 mm
$N_4$	4 mm
Basic dynamic load rating C	25.5 kN
Basic static load rating $C_0$	15.3 kN
Fatigue load limit $P_u$	0.655 kN
Limiting speed	5300 r/min
Mass bearing unit	1.3 kg
Thread grub screw $G_2$	5/16-24 UNF
Hexagonal key size for grub screw N	3.969 mm
Recommended tightening torque for grub screw	6.5 N · m
Recommended diameter for attachment bolts, mm G	12 mm
Recommended diameter for attachment bolts, inch G	0.5 in



**Guangzhou Wangli Auto Parts Co., Ltd.**