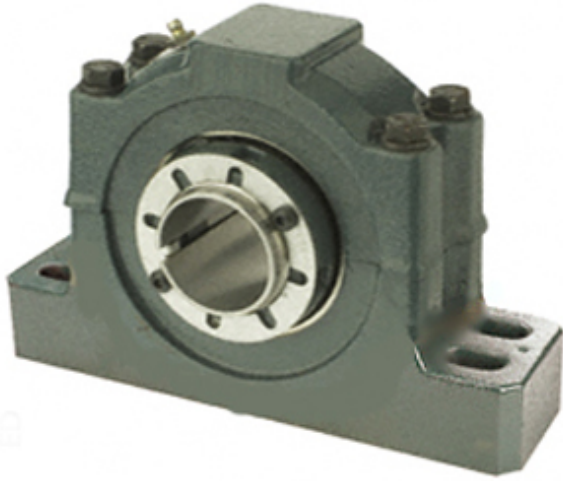




## Guangzhou Wangli Auto Parts Co., Ltd.



P4B526-ISAF-407L Bearing 2D drawings and 3D CAD models

4.438 Inch | 112.725 Millimeter x 5.234 Inch |  
132.944 Millimeter x 6 Inch | 152.4 Millimeter  
DODGE P4B526-ISAF-407L Pillow Block  
Bearings

Bearing No. P4B526-ISAF-407L

Category	Pillow Block Bearings
Inventory	4.0
Manufacturer Name	ABB MOTORS AND MECHANICAL INC
Minimum Buy Quantity	N/A
Weight	63.56
EAN	0782475311118
Product Group	M06288
Number of Mounting Holes	4
Mounting Method	Adapter Sleeve
Housing Style	4 Bolt Pillow Block
Rolling Element	Spherical Roller Bearing
Housing Material	Cast Iron
Expansion / Non-expansion	Non-expansion
Mounting Bolts	7/8 Inch
Relubricatable	Yes
Insert Part Number	INS-IP-407L
Seals	Metallic Labyrinth
Housing Configuration	2 Piece Split
Inch - Metric	Inch
Other Features	Double Row   Has Flinger
Long Description	4 Bolt Pillow Block; 4-7/16" Bore; 6" Base to Center Height; Adapter Sleeve Mount; Spherical Roller



## Guangzhou Wangli Auto Parts Co., Ltd.

	Bearing; 14-1/2" Minimum Bolt Spacing; 16" Bolt Spacing Maximum; Relubricatable;
Category	Pillow Block
UNSPSC	31171511
Harmonized Tariff Code	8483.20.40.80
Noun	Bearing
Keyword String	Pillow Block
Manufacturer URL	<a href="http://www.dodge-pt.com">http://www.dodge-pt.com</a>
Manufacturer Item Number	P4B526-ISAF-407L
Manufacturer Internal Number	070082
Weight / LBS	140
Actual Bolt Center to Center	0 Inch   0Millimeter
Nominal Bolt Center to Center	15 Inch   381 Millimeter
Bolt Spacing Minimum	14.5 Inch   368.3Millimeter
D	5.234 Inch   132.944 Millimeter
d	4.438 Inch   112.725 Millimeter
B	6 Inch   152.4 Millimeter
Bolt Spacing Maximum	16 Inch   406.4Millimeter